

杖 ICTSS Walking Tour: COURSE-C

Fee

2,500JPY/person, Minimum 2 persons

Overview

Watarase Keikoku Railway connects Kiryu City and Nikko.

In this tour you will feel the history of Omama City and Kiryu City.

If you wish, you can take onsen too. During the tour you can enjoy the wonderful scenery by train.

Highlights

Enjoy a trip with Watarase Keikoku Railway for some cities near Kiryu.

Omama Museum Conodonto-kan (Midori City important cultural property)

Feel the history and be healed by a hot spring at Mizunuma Station.

See the exhibition of Texttiles at Kiryu.

📅 Schedule for a Day Trip 📅

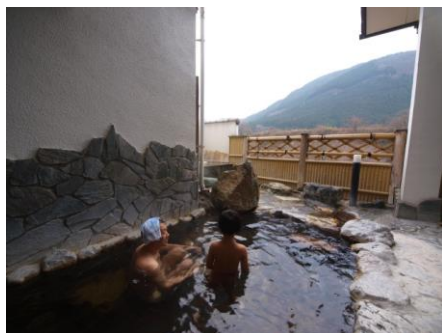
Kiryu Station (The meeting place, 9:00) = 🚆 = Omama Station = 杖 = Shinmei-gu Shrine precincts = 杖
= Omama museum Conodonto-kan = 杖 = Nihonichi Shoyu, Oka Naosaburo Shoten co., Ltd. = 杖 =
Omama Station = 🚆 = Mizunuma Station = Mizunuma Station hot spring center [Lunch time] = 🚆 =
Kiryu Station = 杖 = Kiryu Textile Hall Old Building (Kiryu Orimono Kinenkan) = 杖 = Tourism and
Souvenirs Center Watarase = 杖 = Silk Twist Memorial (Kiryu Orimono Kinenkan) = 杖 = Toyoko Inn
Kiryu-eki Minami-guchi (Breakup)



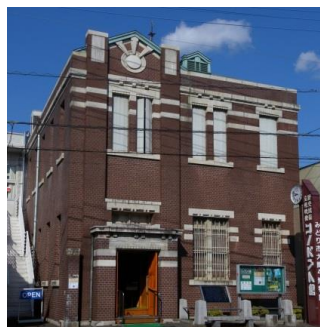
Kennen Kinenkan



Watarase Keikoku Railway



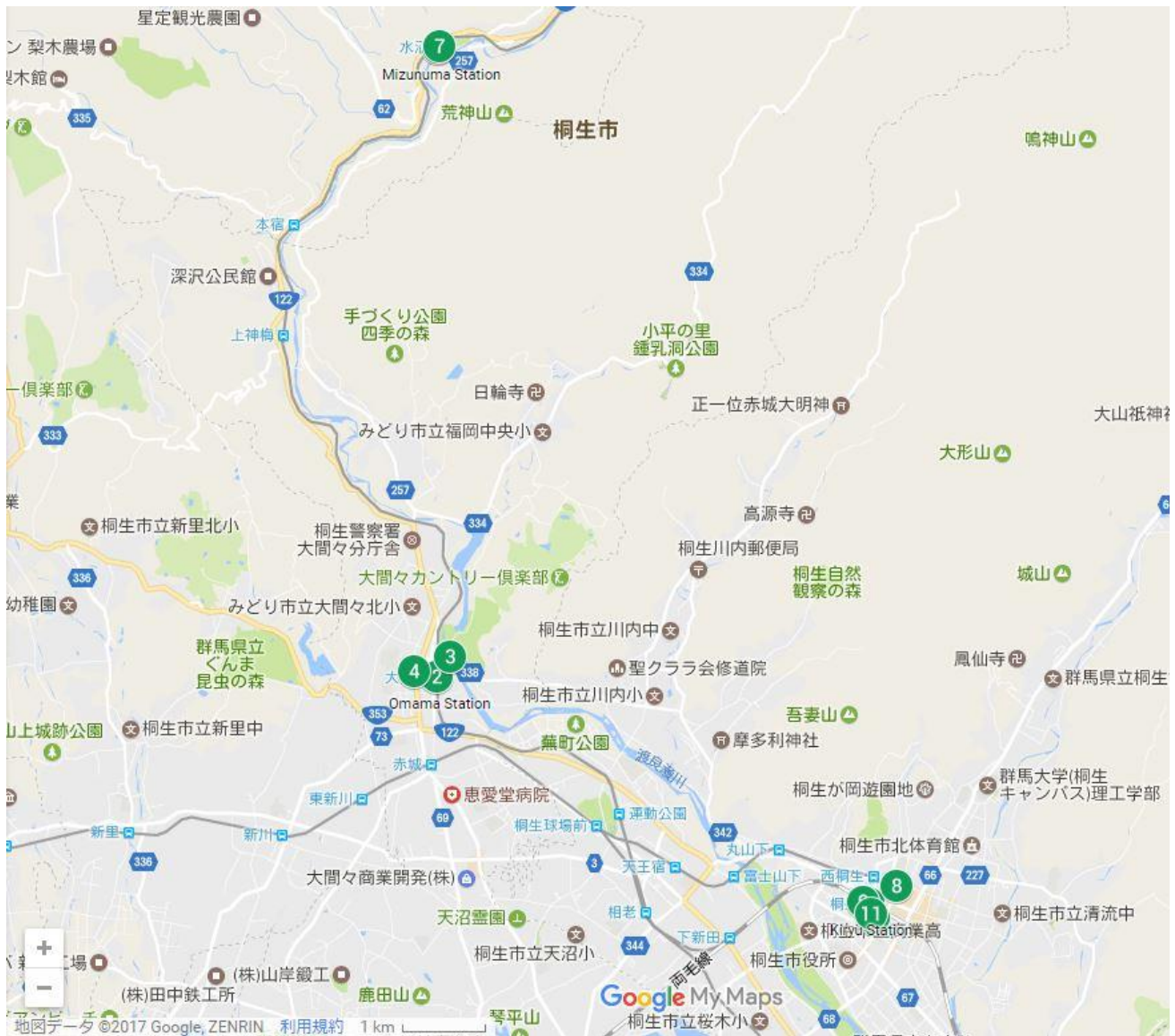
Mizunuma Station Hot Spring



Omama museum Conodonto-kan

*Source of Azuma park photo 「ググっとぐんま公式サイト」 :<http://gunma-dc.net/>

COURSE-C's MAP



- ① Kiryu Station
- ② Omama Station
- ③ Shinmeigu
- ④ Omama museum Conodont-kan
- ⑤ Nihonichi Shoyu, Oka Naosaburou Shoten co., Ltd.
- ⑥ Mizunuma Station
- ⑦ Mizunuma Station hot spring center
- ⑧ Kiryu Textile Hall Old Building (Kiryu Orimono Kinenkan)
- ⑨ Tourism and Souvenirs Center Watarase
- ⑩ Silk Twist Memorial (kennen kinenkan)
- ⑪ Toyoko Inn Kiryu-eki Minami-guchi